

Social responsibility has been part of the ESADE DNA since its foundation more than 55 years ago. We are committed to training individuals who are aware of their responsibilities as citizens and professionals, who can make a significant contribution to building societies that are increasingly free, fair, and prosperous. We strive to become more socially responsible and sustainable in everything we do.



[rse@esade.edu](mailto:rse@esade.edu)

[www.esade.edu/rse](http://www.esade.edu/rse)

*Inspiring futures*



# RS-E

## *ESADE's social responsibility*

ESADE inspires and trains individuals to become competent professionals in management and law through education, research, and social debate as well as becoming socially responsible citizens.

**ESADE STRIVES TO BE INCREASINGLY SOCIALLY RESPONSIBLE AND SUSTAINABLE IN ALL ITS ACTIVITIES.**

The RS-ESADE Master Plan encompasses numerous projects that involve the entire community in the several areas:



# HOW CAN YOU PARTICIPATE?



Respect your colleagues, everyone around you, and yourself. Be sensitive to the needs of others.

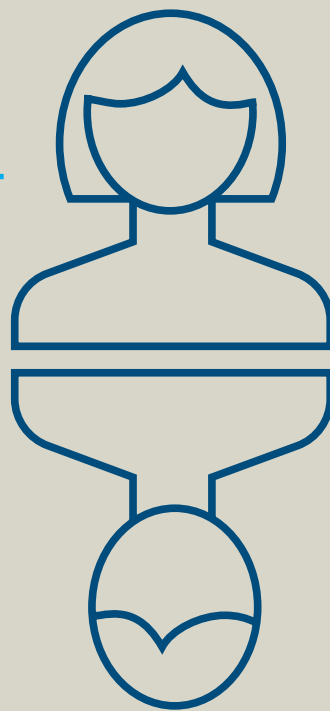


Take the initiative in charitable activities, and participate in those activities organised by your colleagues, student associations and ESADE.



Lead by example in respecting the environment and ESADE installations – especially in bars and restaurants.

- Try not to drink water from plastic bottles and use the fountains.
- Avoid wasting food.
- Turn off computers that aren't being used
- Take advantage of natural light instead of artificial light.
- Avoid unnecessary use of paper.



Take part in charitable activities like:

Food collection Campaign  
*(November)*



Barcelona Magic Line  
*(Sant Joan de Déu, March)*



Sant Jordi Roses for Solidarity  
*(April)*



Give blood during both annual campus campaigns  
*(December and April)*



# WHAT DO YOU PROPOSE?